

Ellesborough Road & Bacombe Lane Reinstatements

Features for Reinstatement

Wendover Green Tunnel (Ch.54+150)
North Chilterns Area

Consultation with Wendover Parish Council & Buckinghamshire Council LHA

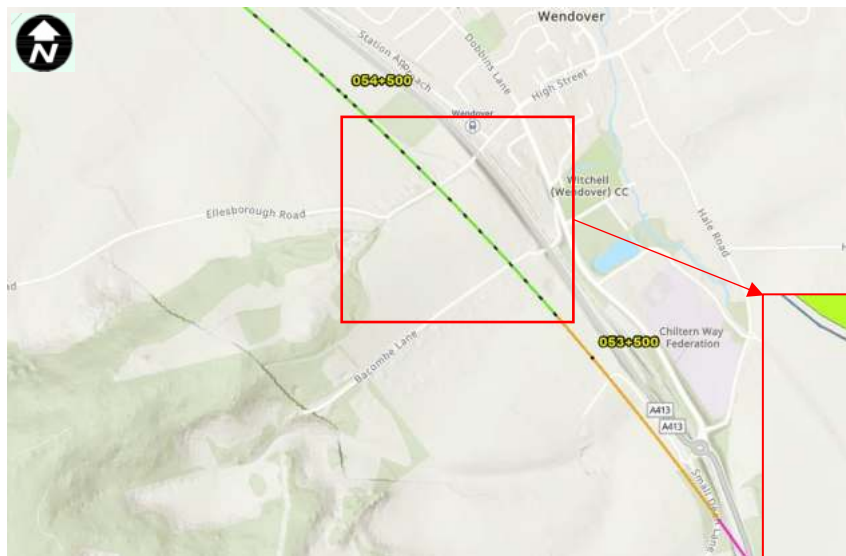
05/08/2025

Advanced Copy

Previous Parish Council meetings:

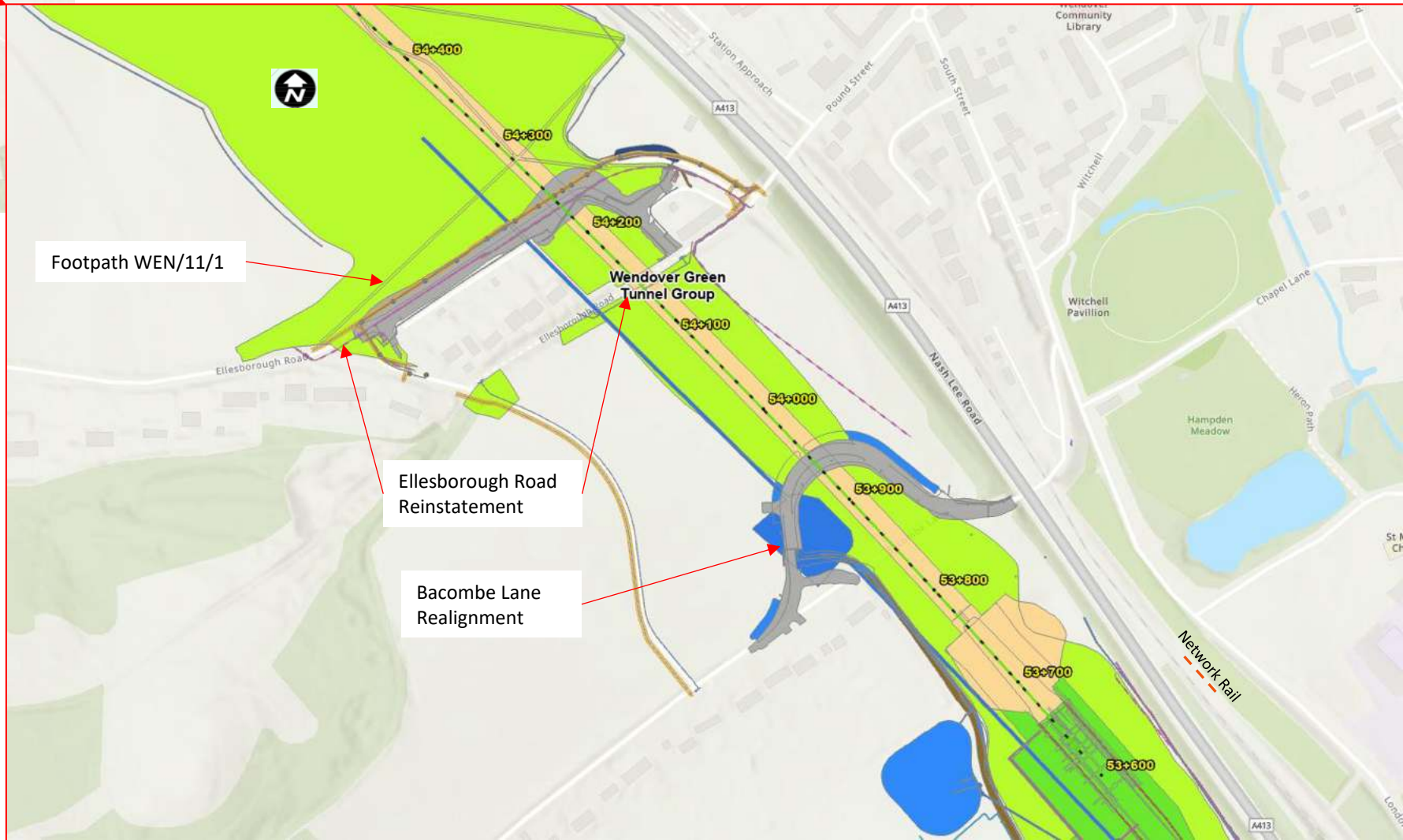
2023-07-21 - Parish Council Street lighting (Bacombe Ln)

Location



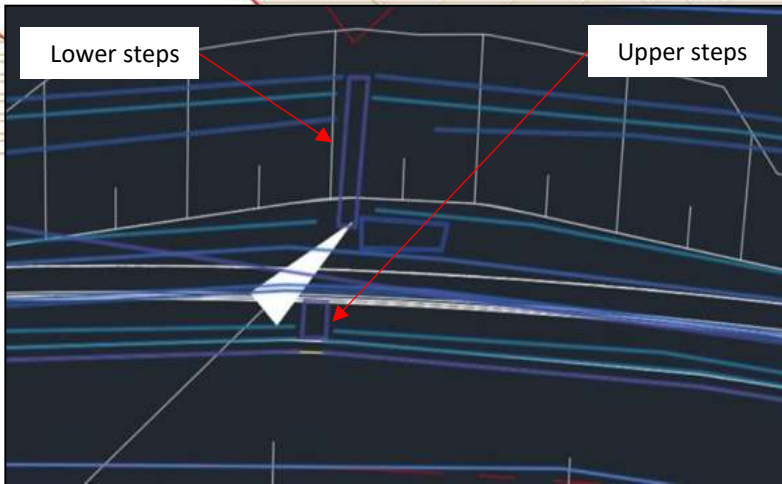
Agenda

- Ellesborough Road
 - Footpath WEN/11/1 realignment & Footway
 - Reinstatement of Parish Street Lighting
- Bacombe Lane – Recap on provision of Parish owned street lighting



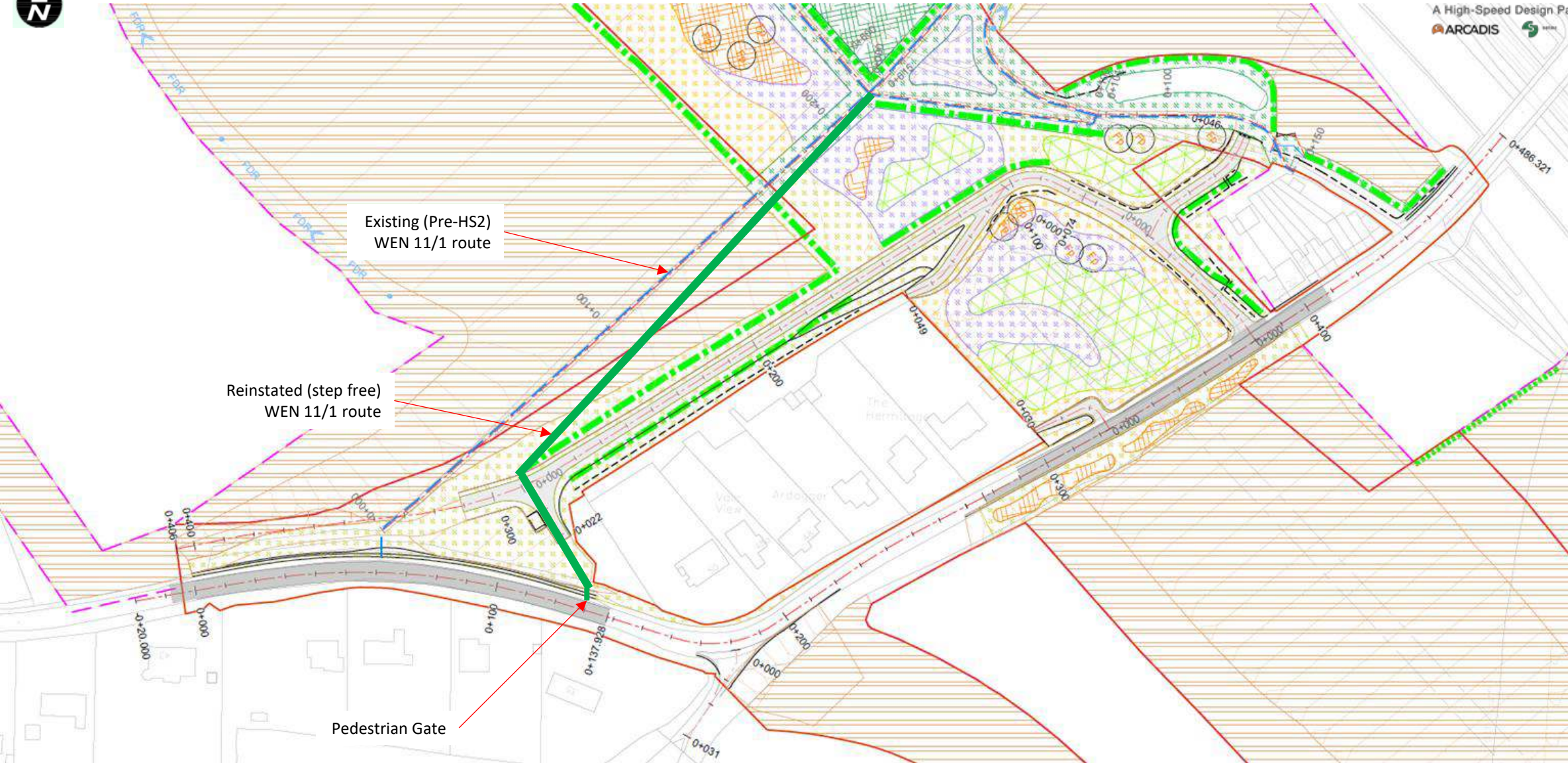
Ellesborough Rd – Lower steps

Consideration under DfT's Inclusive mobility – a guide to best practice on access to pedestrian and transport infrastructure: *“For people who cannot use steps, an alternative, such as a lift or a ramp, should be provided.”*



Ellesborough Road - WEN 11/1 Footpath route

Proposed design realigns footpath WEN11/1 and does not reinstate the lower steps thereby improving inclusive mobility



Upper Steps

Existing arrangement:

- Steps are a trip hazard
- Encourages crossing of the road at an unsafe location (visibility)
- No level verge to cross over to; i.e.. pedestrians walk in road to cross.
- Question of who they were intended serve - Assumption is only for the three properties marked below.

Design:

Upper steps will not be reinstated on safety grounds

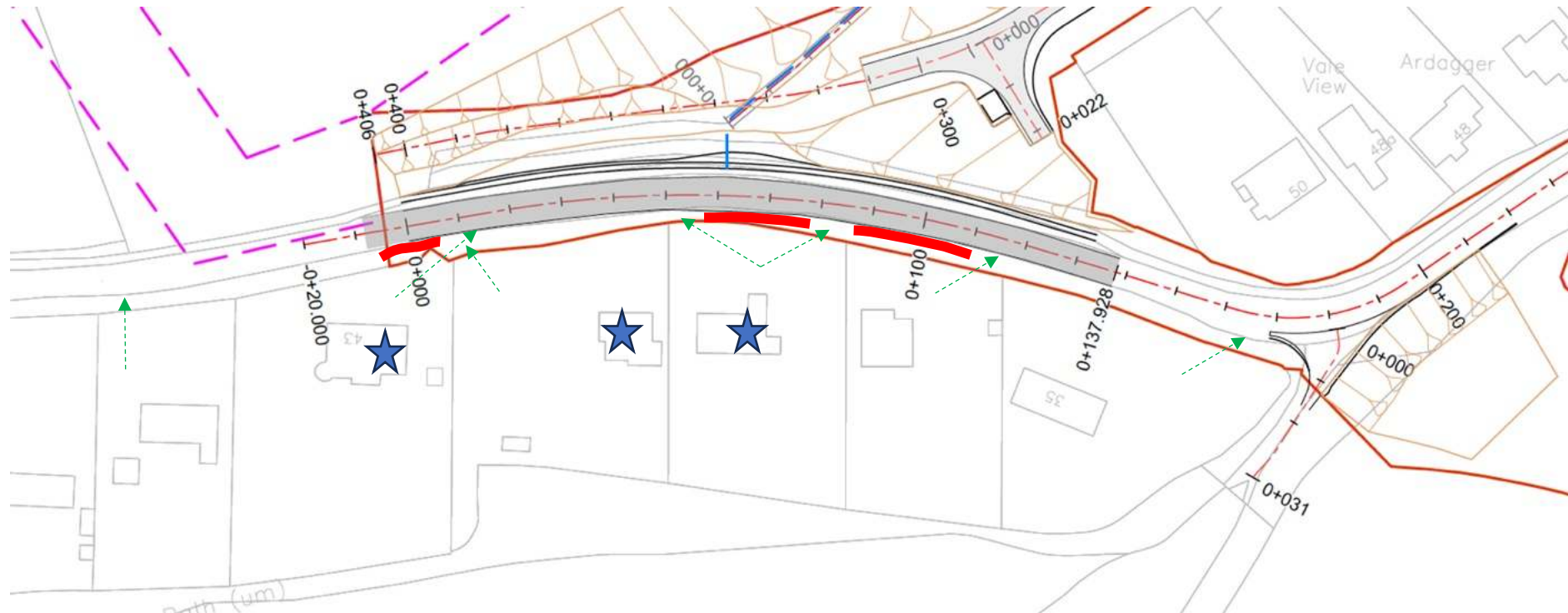
No compliant locations for a crossing are identified within HS2 Act Limits.

Footway to be raised in level with high profile kerb over the full length* for residents to cross as they wish.

*Nb. Short lengths at each end not possible due to existing utilities present.

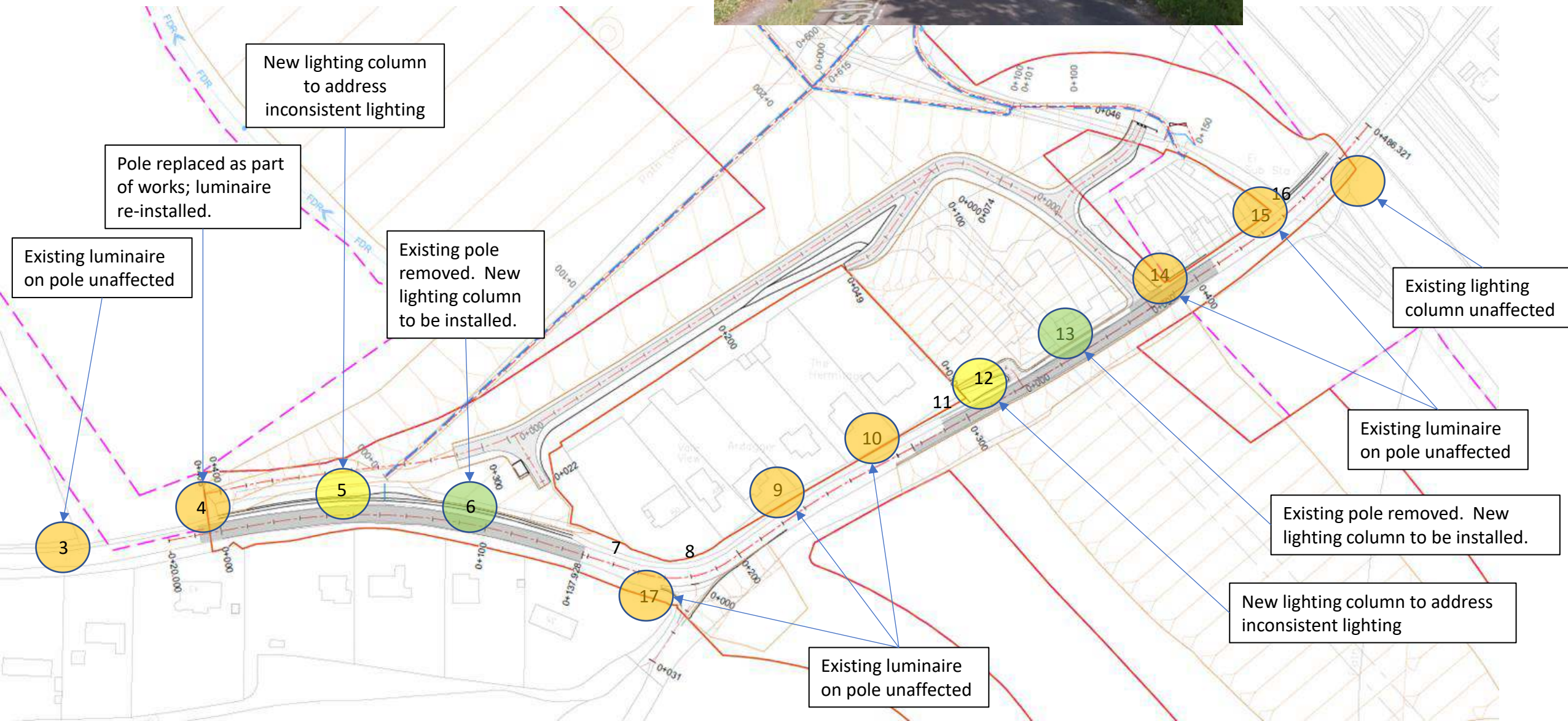
Key

- ★ Residents affected
- Red line Restricted verge access
- Green dashed arrow Property access



Ellesborough Rd - Street lighting

- Ellesborough Road to be reinstated as existing with a two-lane highway
- Mix of 30mph and 40mph speed limit retained
- Village gateway feature reinstated as far as practicable.



Ellesborough Road Reinstatement – Street lighting

- Existing street lighting consists of power pole mounted luminaires.
- All assumed owned/maintained by Parish Council
- Lengths of existing overhead power lines to be removed and power diverted underground removing poles
- New columns installed with individual DNO connections (i.e. no feeder/circuitry)
- Design approach is to provide as-existing lighting levels as far as reasonably practicable
- Existing lighting units are unknown therefore this will be based on the following assumptions unless noted otherwise by Parish Council:
 - a) Height of lighting column and bracket above carriageway – 6m
 - b) Outreach bracket projection – 0.5m
 - c) Luminaire manufacturer and model – C U Phosco P852 K; 24 LED
 - d) Type and wattage of light source – LED 20-60W
 - e) Luminaire photometric setting – Appropriate selection to be made upon lighting assessment if not available from Parish Council.
 - f) Luminaire inclination – 0-5 degrees
 - g) Luminaire enclosure type (e.g. Flat glass/Low Profile/Dished Bowl) – Flat glass
 - h) Control type – Photocell mounted on each luminaire
- Above assumptions and design approach to be agreed with the Parish Council
- Above design approach to be reviewed by Buckinghamshire Council LHA for comment

Bacombe Lane – Street Lighting



- Bacombe Ln to be diverted with a two-lane highway retaining 30mph speed limit.
- Existing lighting arrangement is not providing any effective lighting.
- New lighting will intrude into the National Landscape
- Therefore, no replacement lighting is proposed.



A High-Speed Design Partnership



Existing luminaire mounted on overhead power poles retained.

Existing luminaire mounted on overhead power pole removed and not replaced.

Lighting columns to remain

Lighting column to be repositioned to suit new verge

- All lighting is owned and maintained by the Parish Council
- Consultation with LHA indicated agreement in principle the approach on lighting
- Consultation with Parish Council in 2023 indicated agreement in principle the approach on lighting provision pending discussions with residents
- Consultation with the Bacombe Lane Resident's Trust 24/07/25 who expressed desire to have lighting.